

JAMES COLELLA, PE

SENIOR ASSOCIATE

*Joined the Firm
2010*

Mr. Colella joined B&H in 2010 as a Senior Engineer, and has advanced to a Senior Associate. His responsibilities include serving as project manager for a wide range of projects, overseeing staff, structural design, production of construction documents, and technical specifications. Over time, he has developed skills in designing multiple structural materials, including steel, conventional and post-tensioned concrete, masonry, wood, and cold-formed framing. He also has experience designing for high-seismic and hurricane loads in projects throughout the United States, as well as tornado shelters, peer reviews, expert witness, and design of unique structures such as public artwork.

Mr. Colella has over 20 years of experience in structural engineering design at both B&H and other firms. He uses this broad experience in multiple types of projects to bring unique structural solutions for today's projects. He is capable of overseeing a wide range of projects, including schools, hotels, housing, parking structures and office construction; large public projects; and specialty projects such as structural support for public artwork, structural repairs and renovation of existing structures.



PROJECT EXPERIENCE:

HOUSING & ASSISTED LIVING

121 Larchmere	Cleveland, OH
I Promise Housing	Akron, OH
The Quarter – Phase 2	Cleveland, OH
Cuyahoga Metropolitan Housing Authority (CMHA)	Cleveland, OH
Cedar Redevelopment Phases 1-3	
Bohn Tower Renovation	
Heritage View Phase V	
Woodhill Redevelopment Phases 1-3	
Vista Springs Trillium Village	Clarkston, MI
Falcon Point Lofts	Sandusky, OH
Foundry Lofts	Cleveland, OH
Lorain Metropolitan Housing Authority – Southside Gardens	Lorain, OH
Harper's Pointe Apartments	Cleveland, OH
Westlake Memory Care	Westlake, OH
Edina Park Place	Edina, MN
Westerly Senior Living Apartments – Renovations	Lakewood, OH
Maple Park Place	Maple Heights, OH
Hough Heritage	Cleveland, OH
Innovation Square	Cleveland, OH
Greenbridge Commons	Cleveland, OH
St. Michaels – The Arch Adaptive Reuse	Cleveland, OH

HIGHER EDUCATION & STUDENT HOUSING

Case Western Reserve University	Cleveland, OH
Milton and Tamar Maltz Performing Arts Center	
Comprehensive Cancer Center Addition	
Euclid 3 at Case Western Reserve University	Cleveland, OH
The Langston at Cleveland State University	Cleveland, OH
1609 Hazel Apartments at Cleveland Institute of Music	Cleveland, OH
345 Flats Student Housing at Kent State University	Kent, OH
The Ohio State University Wexner Medical Center – Ambulatory Care Center & Parking Garage	Columbus, OH

barberhoffman.com

Education:

Cleveland State University, 2001
Bachelor of Science in Civil Engineering

Registration: P.E. 2006

Ohio

Professional Affiliations:

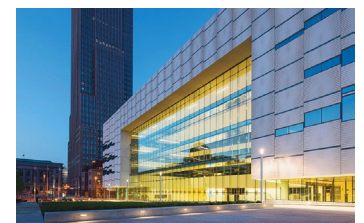
Structural Engineers Association of Ohio

American Institute of Steel Construction

American Concrete Institute

PreCast/Prestressed Concrete Institute

Concrete Reinforcing Steel Institute



**Huntington Convention Center
of Cleveland & Global Center
for Health Innovation**

Cleveland, OH



**345 Flats Student Housing
at Kent State University**

Kent, OH

Ursuline College – Merici Crossings
 Oberlin College – Woodland Student Housing
 Heidelberg University – France Residence Hall
 The Ohio State University – RDJC Mechanical Upgrades

Pepper Pike, OH
 Oberlin, OH
 Tiffin, OH
 Columbus, OH

K-12

Cuyahoga Falls – New 6-12 School
 Kent City School District – Various Additions & Renovations
 Fremont Ross – New High School & Technical Center
 Lorain High School – New Construction
 John F. Kennedy High School – New Construction
 Benedictine High School – Bus Garage
 The Gerson School – Addition & Renovations
 Campus International High School – Renovations

Cuyahoga Falls, OH
 Kent, OH
 Fremont, OH
 Lorain, OH
 Cleveland, OH
 Cleveland, OH
 Cleveland, OH
 Cleveland, OH

COMMERCIAL BUILDINGS

Huntington Convention Center of Cleveland &
 Global Center for Health Innovation
 KeyBank Branches – Multiple Locations
 PNC Resource Center
 St. Mark Church – Adaptive Reuse
 Terrasana Dispensary

Cleveland, OH
 (City Varies)
 Cleveland, OH
 Cleveland, OH
 Columbus, OH

HOTEL

Hilton Cleveland Downtown
 Palmetto Sheraton Hotel
 Pepper Pike Club – Addition
 The Landing at Rivers Casino
 The Westin Cleveland Downtown – Renovations & Alterations

Cleveland, OH
 Palmetto, FL
 Pepper Pike, OH
 Pittsburgh, PA
 Cleveland, OH

PARKING GARAGES

The Westin Cleveland Downtown – Parking Garage & Façade Repairs
 Lorain County – Parking Garage Repairs & Restoration
 AECOM – Parking Garage Repairs & Restoration
 CC Fairview Hospital FV G1 – East Garage Repair & Restoration
 Tower East – Parking Garage Repairs
 Summa Health Akron Campus – Parking Garage Repairs
 Huntington Park – Parking Garage Rehabilitation
 AHN – West Penn Hospital Millvale Parking Garage Renovations
 Dealer Tire Parking Garage
 Gateway East Parking Garage – Repairs

Cleveland, OH
 Elyria, OH
 Cleveland, OH
 Cleveland, OH
 Shaker Heights, OH
 Akron, OH
 Cleveland, OH
 Pittsburgh, PA
 Cleveland, OH
 Cleveland, OH

SPECIALTY/MISCELLANEOUS

Lot Ball by Lars Fisk
 Reading Nest by Mark Reigelman
 Dendrite by Olga Ziemka
 Terrella by Sarah Kabo
 Untitled (Dango) by Jun Kaneko

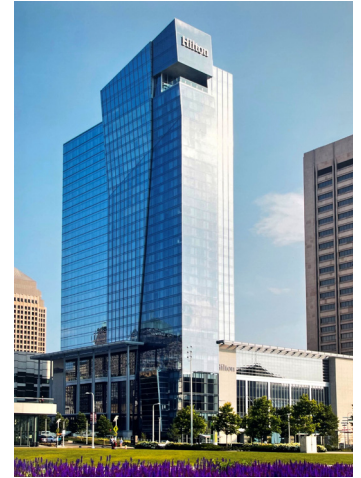
Cleveland, OH
 Cleveland, OH
 Cleveland, OH
 Cleveland, OH
 Cleveland, OH

CIVIC

Cleveland Fire Station #26
 Clark Recreation Center

Cleveland, OH
 Cleveland, OH

KEY PROJECTS



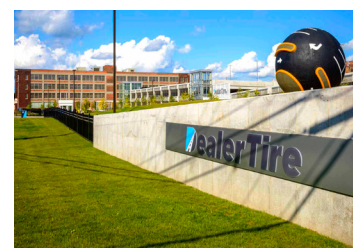
Hilton Cleveland Downtown
 Cleveland, OH



Dendrite by Olga Ziemka
 Cleveland, OH



Dealer Tire Parking Garage
 Cleveland, OH



Lot Ball by Lars Fisk
 Cleveland, OH